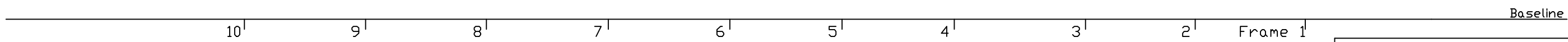
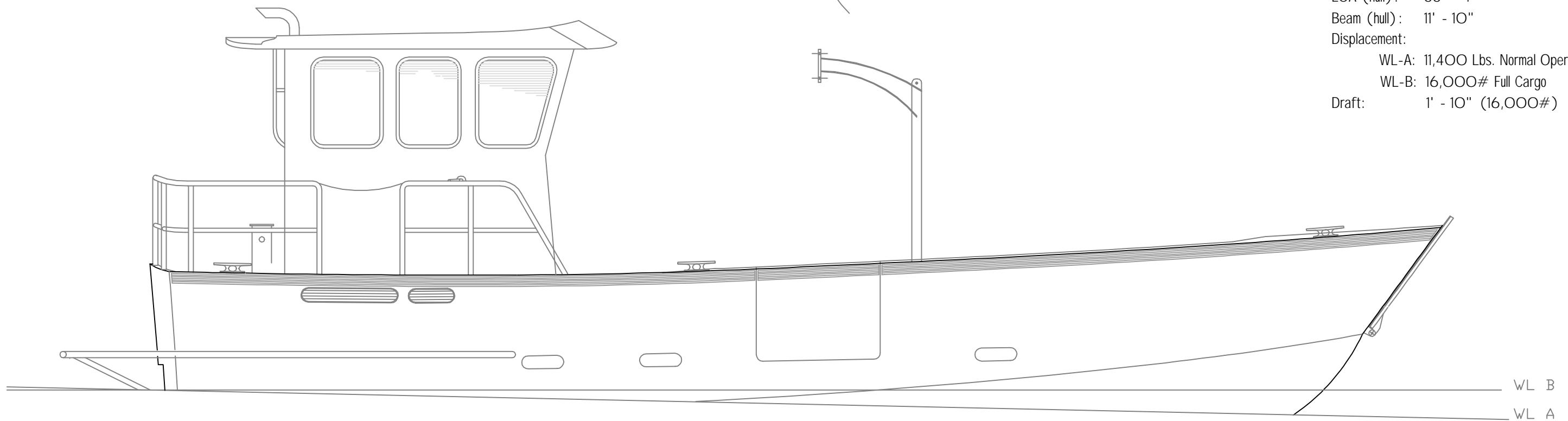


PARTICULARS-  
 LOA (hull): 33' - 1"  
 Beam (hull): 11' - 10"  
 Displacement:  
 WL-A: 11,400 Lbs. Normal Operating  
 WL-B: 16,000# Full Cargo  
 Draft: 1' - 10" (16,000#)



WTBHD

Cargo LCG (4,000 lbs.)  
(for 0° trim)

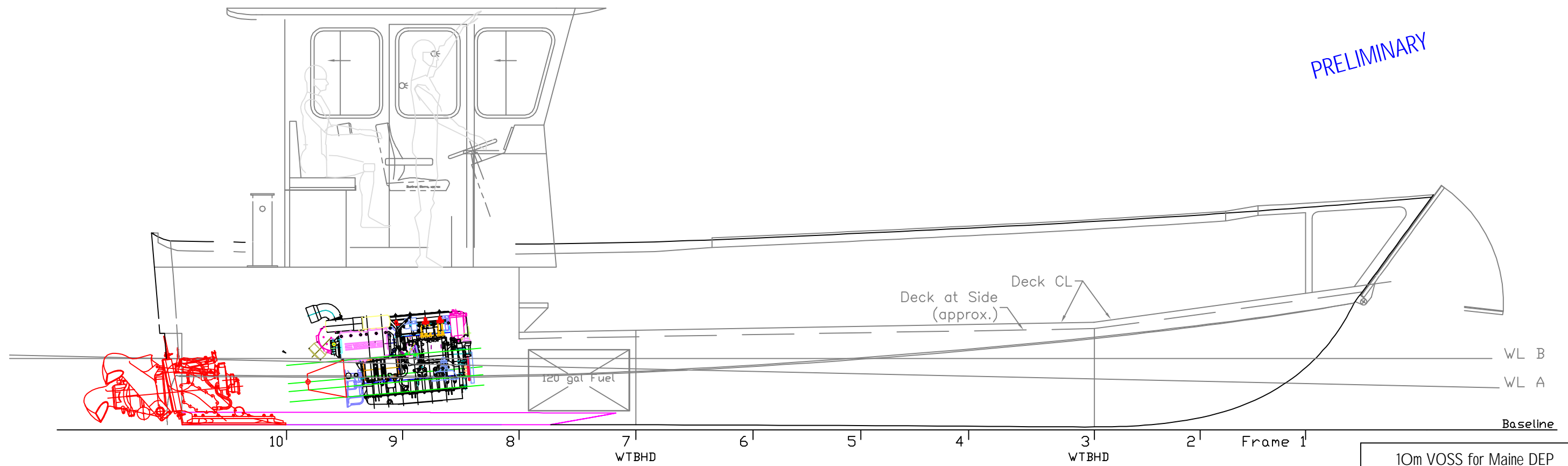
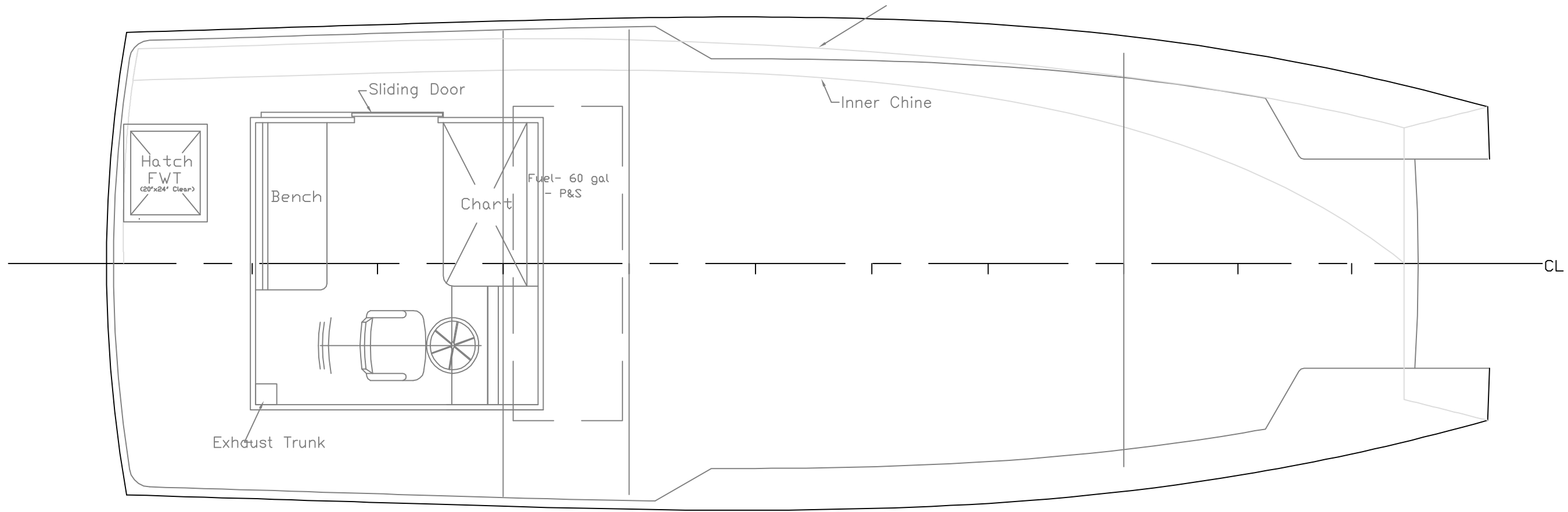
WTBHD

Cargo LCG (2,000 lbs.)  
(for 0° trim)

**PRELIMINARY**

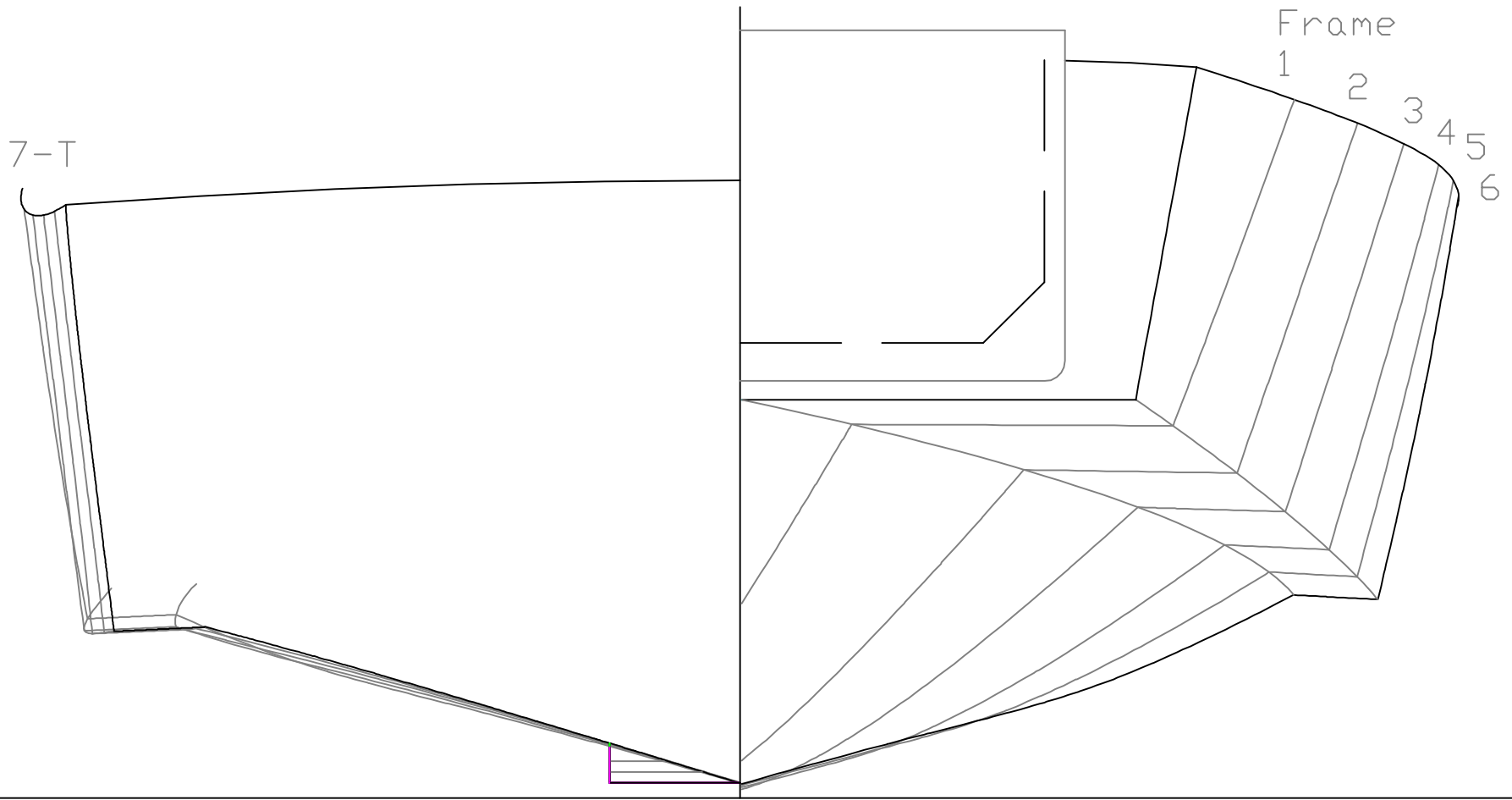
REV.	DESCRIPTION

10m VOSS for Maine DEP		
OUTBOARD VIEWS		
SCALE 3/8" = 1'	DES/DWN WAL	DATE 10/28/02
Response Marine, Inc. Newburyport, MA, www.responsemarine.com		SHEET DWG NO. 204-P1



10m VOSS for Maine DEP		
INBOARD VIEWS		
SCALE 3/8" = 1"	DES/DWN WAL	DATE 10/28/02
<b>Response Marine, Inc.</b> Newburyport, MA, www.responsemarine.com		SHEET DWG NO. 204-P2

REV.	DESCRIPTION



PRELIMINARY

REV.	DESCRIPTION

10m VOSS for Maine DEP		
BODY PLAN (frames)		
SCALE 3/4" = 1'	DES/DWN WAL	DATE 10/28/02
Response Marine, Inc. Newburyport, MA, <a href="http://www.responsemarine.com">www.responsemarine.com</a>		SHEET DWG NO. 204-P3