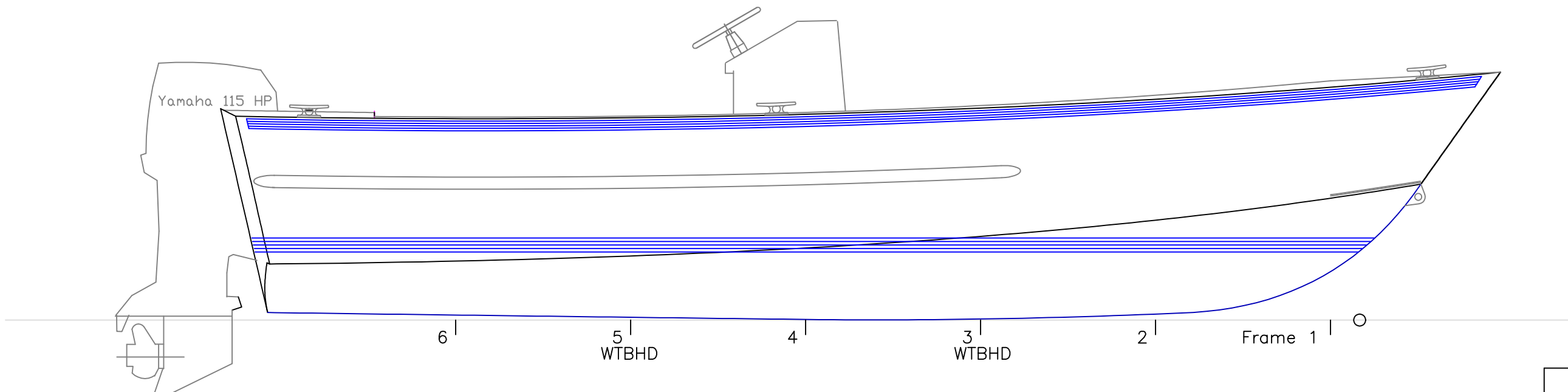
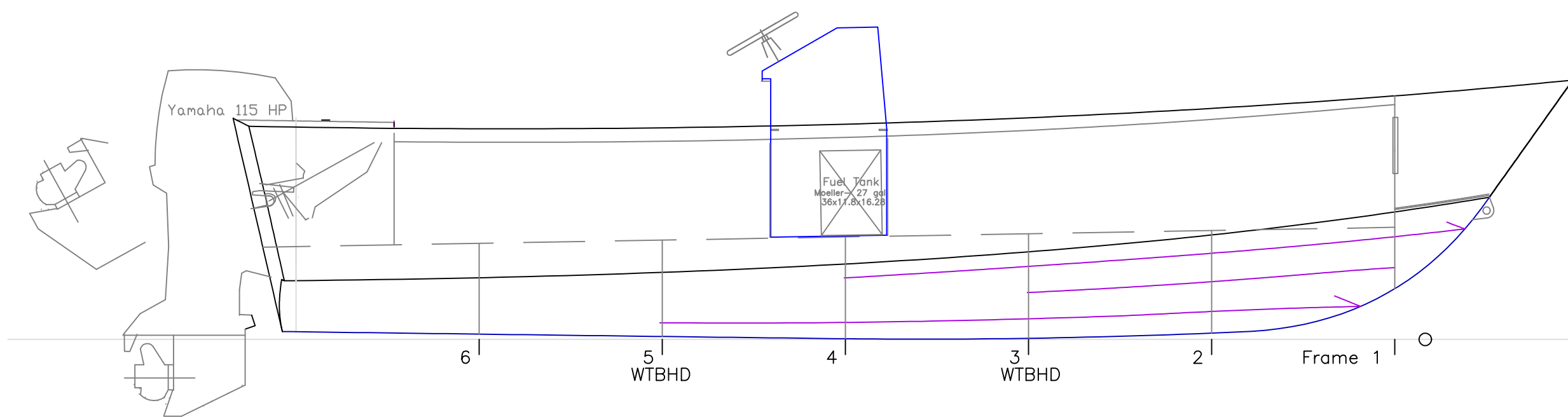
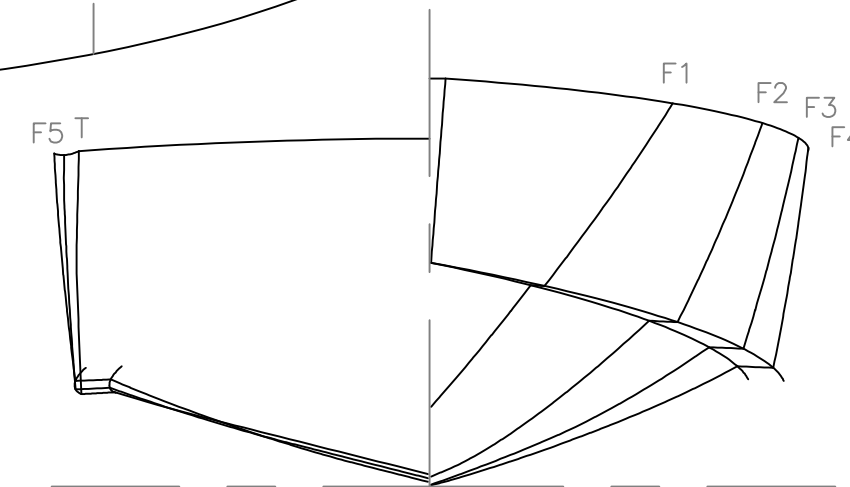
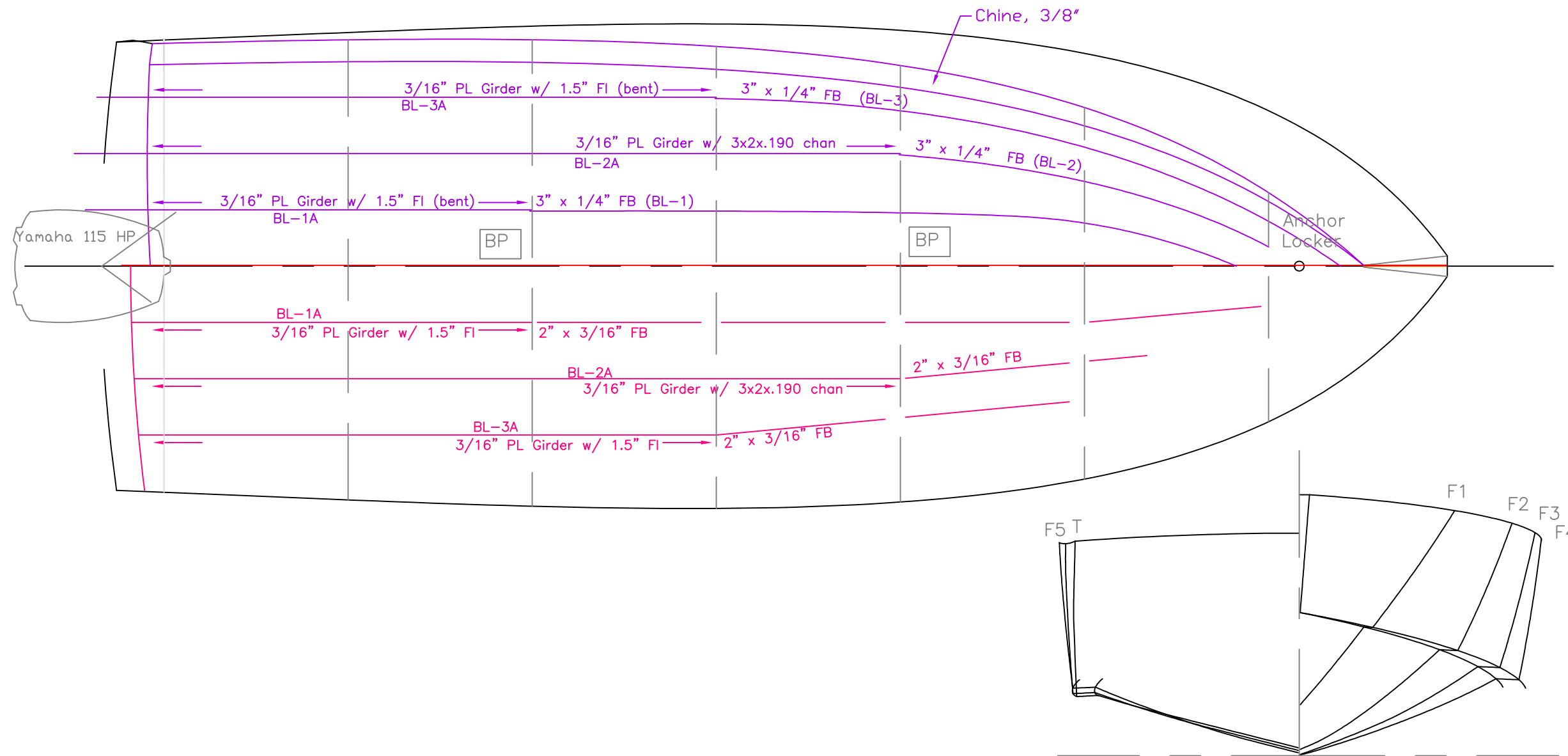


Particulars
 Hull LOA - 22' - 0"
 Hull Beam- 8' - 0"
 LWL - 19' - 0"
 Displacement- 3,200# - 2 pax, 1/2 fuel
 Hull Draft- 1'1"



REV. DESCRIPTION

22' Skiff- Viking Welding		
OUTBOARD VIEWS		
SCALE 1/2" = 1'	DES/DWN WAL	DATE 4/8/02
Response Marine, Inc. Newburyport, MA, www.responsemarine.com		SHEET DWG NO. O202-1



22' Skiff- Viking Welding		
INBOARD VIEWS		
SCALE 1/2" = 1'	DES/DWN WAL	DATE 4/8/02
Response Marine, Inc. Newburyport, MA, www.responsemarine.com		SHEET DWG NO. 0202-2

REV.	DESCRIPTION
1)	12/2/02 Added Body Plan