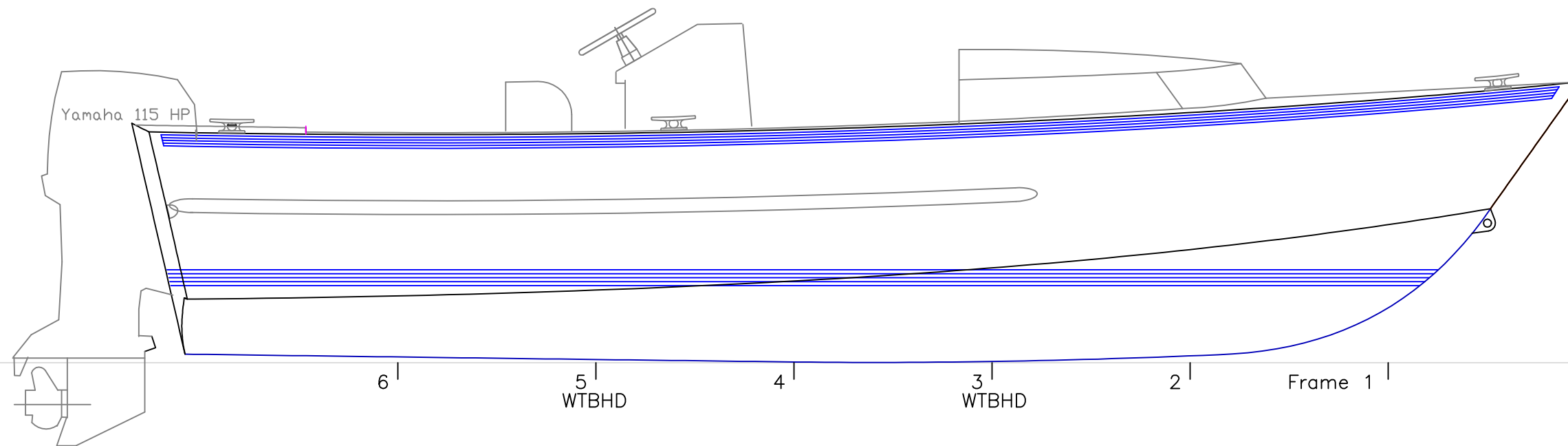


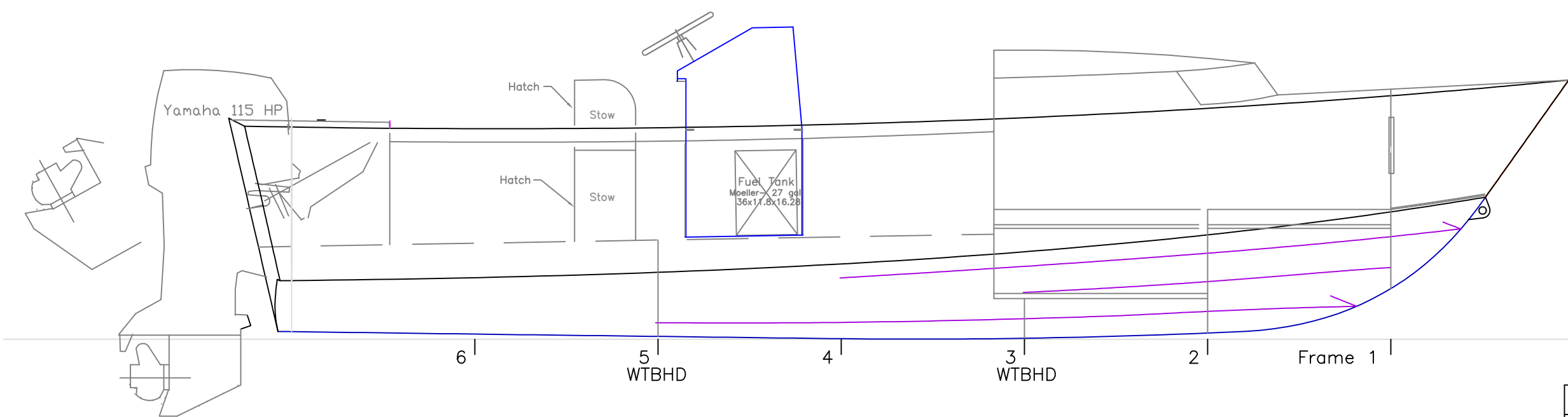
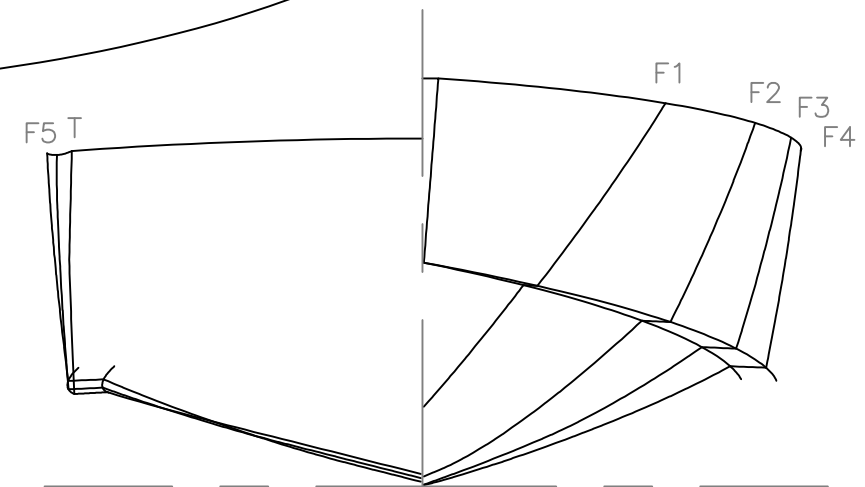
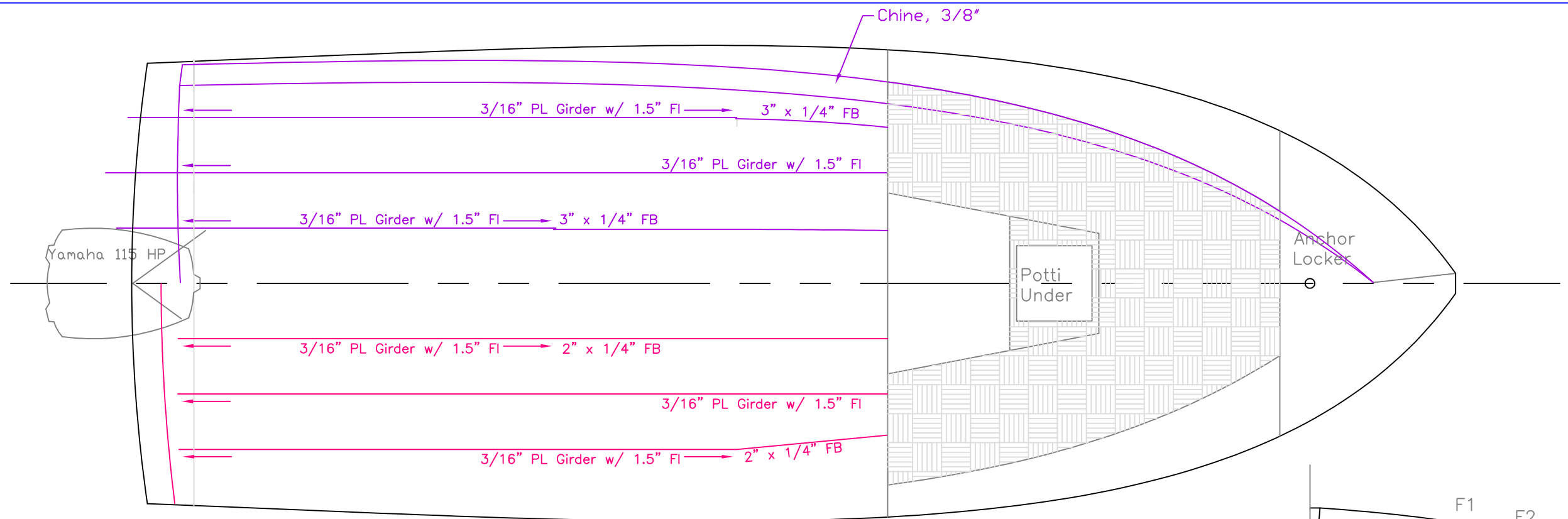
Particulars
 Hull LOA - 22' - 0"
 Hull Beam- 8' - 0"
 LWL - 19' - 0"
 Displacement- 3,350# - 2 pax, 1/2 fuel
 Hull Draft- 1'1"



PRELIMINARY

REV. DESCRIPTION

22' Skiff w/ Cuddy		
OUTBOARD VIEWS		
SCALE 1/2" = 1'	DES/DWN WAL	DATE 12/3/02
Response Marine, Inc. Newburyport, MA, www.responsemarine.com		SHEET DWG NO. O202-A-1



PRELIMINARY

22' Skiff w/ Cuddy		
INBOARD VIEWS		
SCALE 1/2" = 1'	DES/DWN WAL	DATE 12/3/02
DESCRIPTION		SHEET
Response Marine, Inc. Newburyport, MA, www.responsemarine.com		DWG NO. O202-A-2